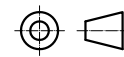


SPECIFICATION	CONNECTION	VALUE
GEAR RATIO		5
EFFICIENCY		96.00%
BACKLASH@NO-LOAD(arcmin)		<=15
MAX.PERMISSIBLE TORQUE(Nm)[lb-in]		28.00[247.82]
MOMENT PERMISSIBLE TORQUE(Nm)[lb-in]		56.00[495.64]
GEARBOX MATCHING MOTOR'S INPUT SHAFT LENGTH (mm)		21~24
NOISE(dB)		<=60
WATERPROOF RATING		IP54
LIFE(h)		20000
AMBIENT TEMPERATURE		-10°C~90°C[14°F~194°F]



	APVD	3.2.2021
	CHKD	
2:3	DRN	
SCALE	SIGNATURE	DATE

PLANETARY GEARBOX

TQEG23-G5-D6