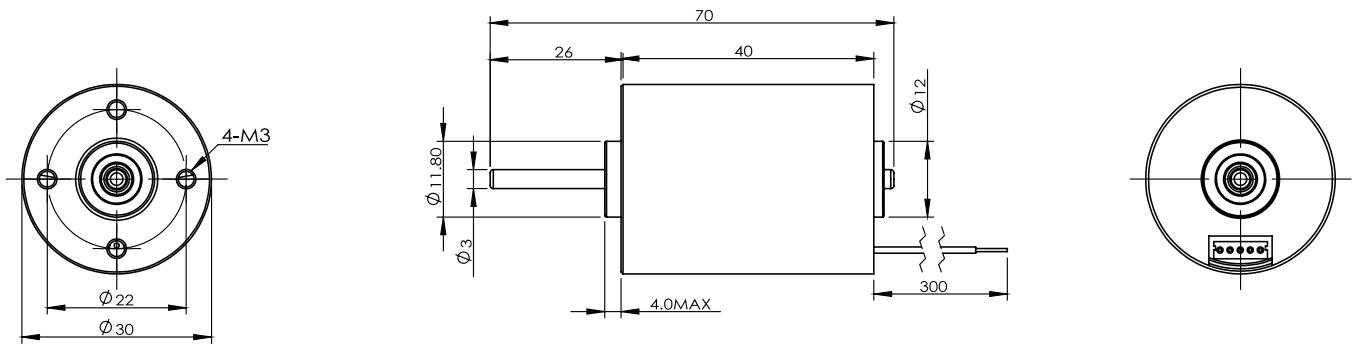
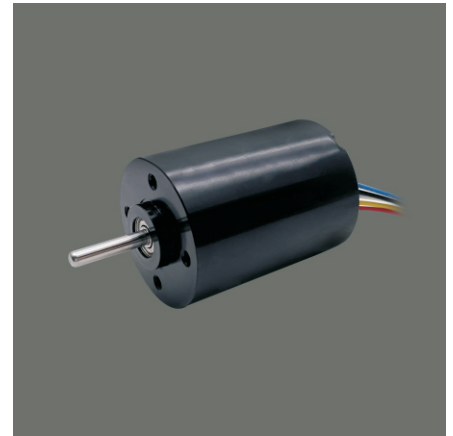


# TEC3040

30mm brushless motor

Connection Mode B	
Clockwise Rotation/Counter Clockwise Rotation	
FG Signal	
PWM Control	
Locked Rotor Protection	
Power	15W (Internal Drive)
	/
Life Expectancy	~ 5000H (Ball Bearing)
	/

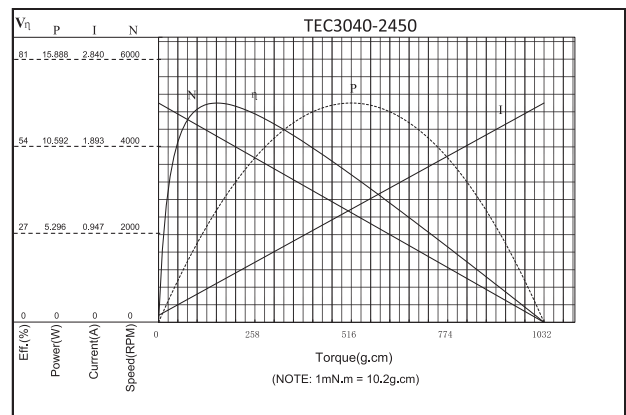
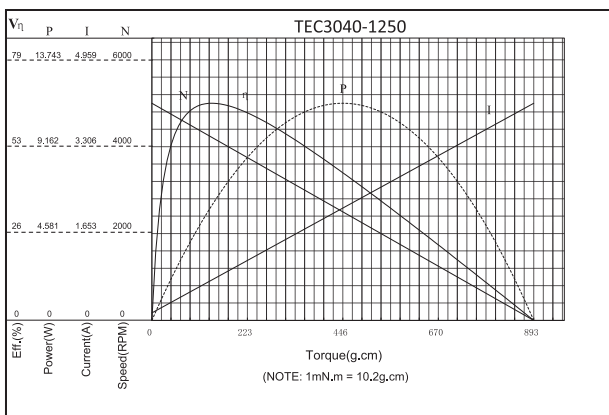


Weight:100g(Approx)

Unit(mm)

## Motor Technical Data

Motor model	Rated voltage	No-load		Rated			Stall		
		Speed	Current	Speed	Torque	Current	Power	Torque	Current
	VDC	r/min	mA	r/min	g.cm	mA	W	g.cm	A
TEC3040	12.0	5000	413	3500	250	1260	9.0	850	3.5
TEC3040	24.0	5000	70	3700	250	620	9.5	950	2.4



NOTE: the left side of red line area can continuous work